



grow your enterprise.

Technology Policy and Funding in the 110th Congress:

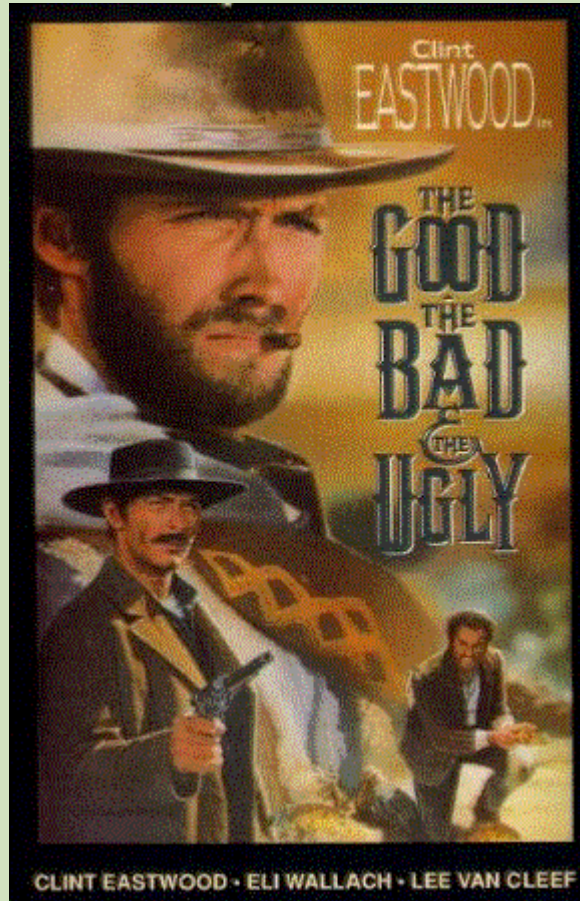
*How new party dynamics will affect business,
innovation, and the American workforce*

Prepared for
The Council of Regional Information Technology Associations (CRITA)

March 5, 2007



The Good, the Bad & the Ugly





GSP Consulting Corp.

grow your enterprise.

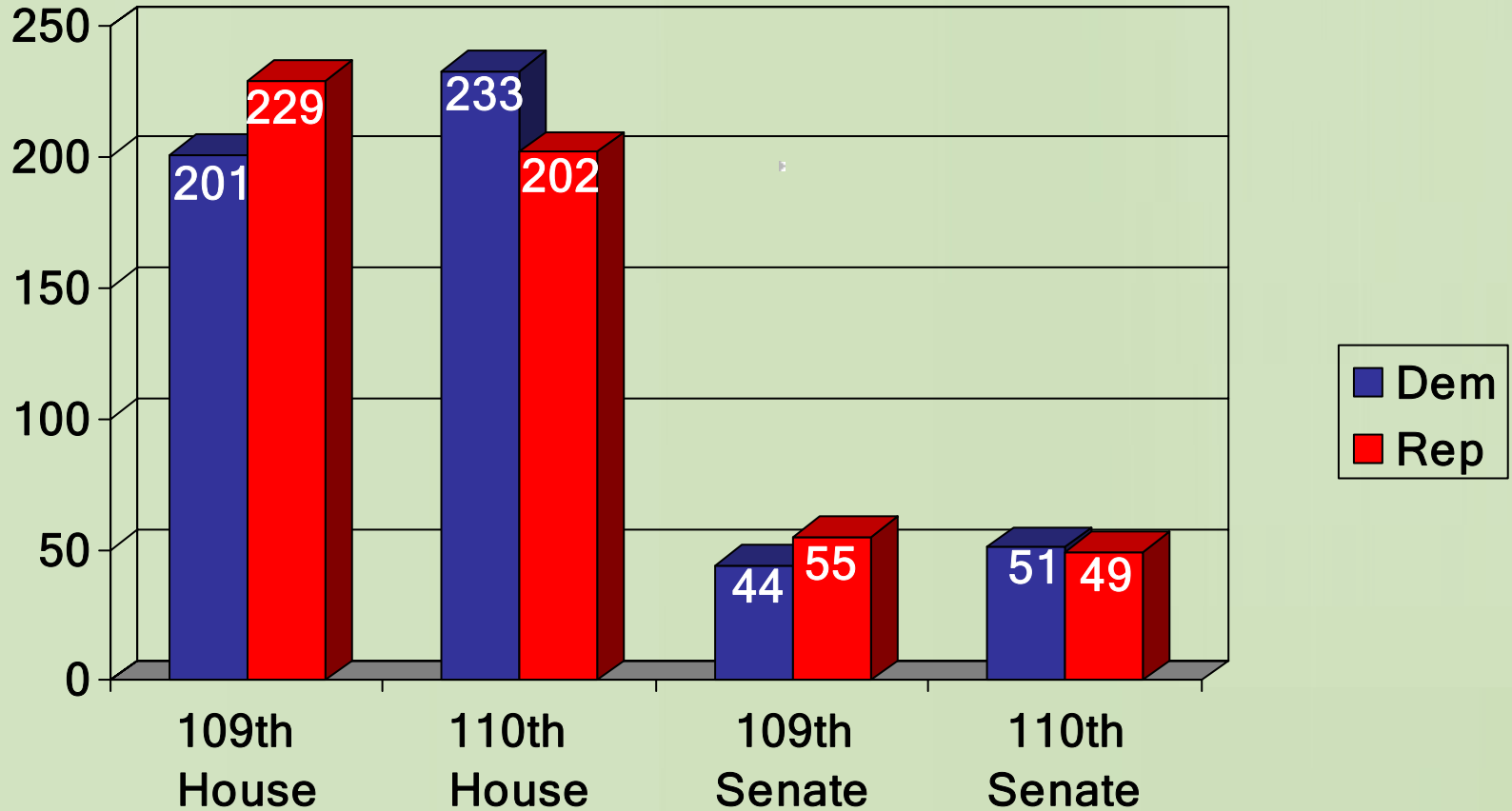
- The GSP Consulting Corporation enables the growth of companies, communities, and economies through a suite of innovative government and economic development consulting services.
- The GSP Service Portfolio's practice areas:
 - GSP Government Affairs
 - GSP Economic Architecture
 - GSP Development Services
- \$3.4 million in revenue in 2006
- 70+ clients in 18 states, 5 state offices
- 24 employees - 35 projected by 2008





grow your enterprise.

Congressional Shift





grow your enterprise.

Major Committee Changes

HOUSE

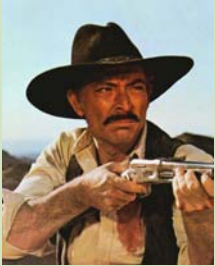
- Defense Chair
 - Bill Young
to John Murtha
- Appropriation Chair
 - Jerry Lewis
to David Obey
- Energy Chair
 - Joe Barton
to John Dingel

SENATE

- Defense Chair
 - Thad Stevens
to Daniel Inouye
- Appropriation Chair
 - Thad Cochran
to Robert Byrd
- Energy Chair
 - Pete Domenici
to Jeff Bingaman

Key Policy Areas

- Education & Workforce Development
- Tax, Finance & Intellectual Property
- Congressional Spending





Education & Workforce Development

- Improve science, technology, engineering & mathematics (STEM) education
- Increase federal funding for basic research in physical sciences, engineering, math, and computer science
- Reform U.S. high-skilled labor (visa and green card system)



Tax, Finance & Intellectual Property

- Sarbanes-Oxley Section 404
 - Reduce business tax on small-medium companies by SOX 404
- R&D Tax Credit Reform
 - Make permanent the R&D tax credit
- Intellectual Property
 - Digital Rights Management
 - Uniform Commercial Code, Article 2
 - Patents and Trademarks
 - Cyber Security



Congressional Spending

Earmark Reform





grow your enterprise.

Questions?

